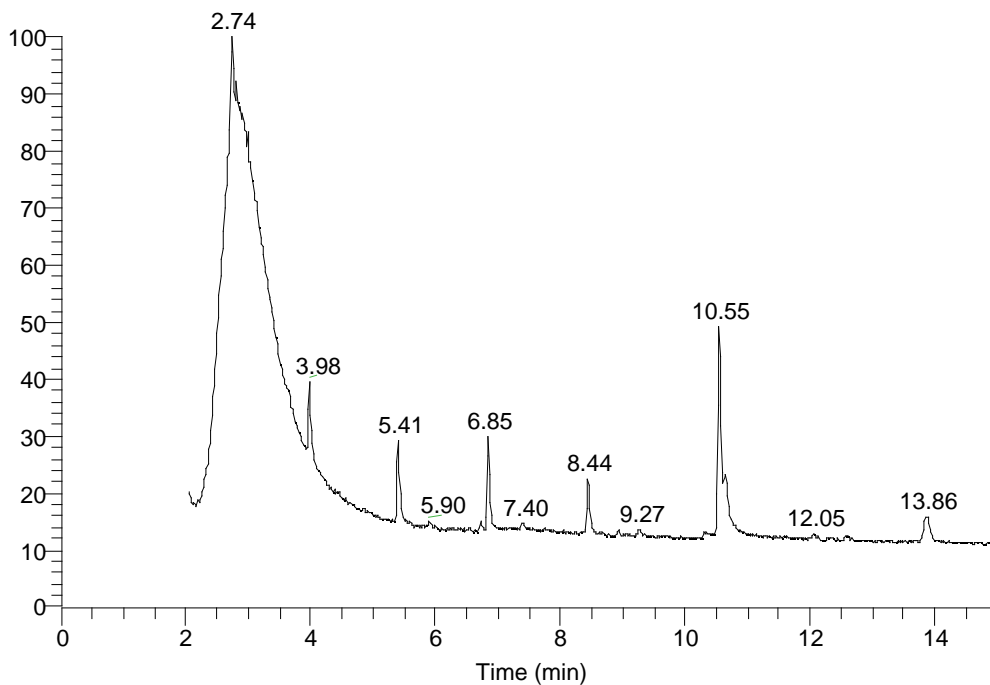


Total ion chromatogram of the eluate from the solid phase extraction of cocaine in water. The cocaine peak has a retention time of 10.55 min.

RT: 0.00 - 15.03



NL:
3.35E5
TIC MS
coc07

Results of some quantitative experiments

The peak area of the cocaine peak arising from injection of a standard cocaine solution (10 ug/mL) was 1.90 million counts. The peak area of the cocaine peak arising from injection of the eluate (0.50 mL) from the solid phase extraction of 5.0 mL of an aqueous solution of cocaine (0.5 ug/mL) was 0.75 million counts. The extraction efficiency for cocaine was ~80% based on these numbers.